

\$629,900 - 57 Chelsea Way, Sherwood Park

MLS® #E4457726

\$629,900

3 Bedroom, 2.50 Bathroom, 2,298 sqft
Single Family on 0.00 Acres

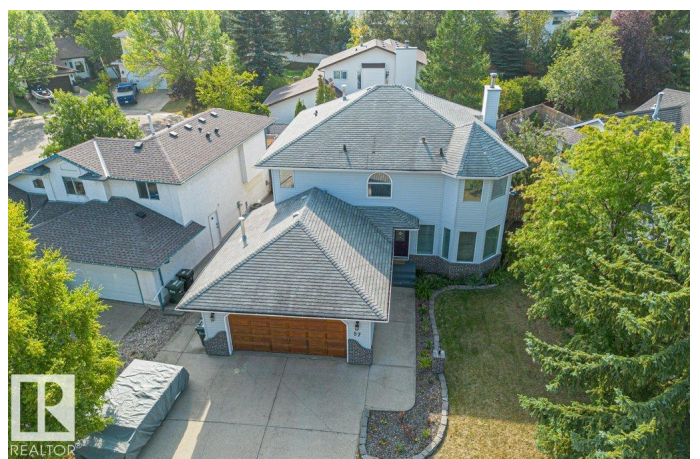
Chelsea Heights, Sherwood Park, AB

WELCOME HOME!! This beautiful 2-storey home in Chelsea Heights is sure to impress!! Upon entering the grand foyer welcomes you with soaring ceilings and abundance of natural light. The chef-inspired kitchen offers ample cabinetry, a glass tile backsplash, quartz countertops, and stainless steel appliances, opening to a bright dining area that overlooks the inviting living room with its cozy wood-burning fireplace. The main floor is finished with second family room, convenient main floor laundry, and a 2 piece bathroom. Upstairs, the expansive primary suite is a true retreat, boasting a walk-in closet and a luxurious spa-like ensuite with a two-person jacuzzi tub and oversized shower. Two additional bedrooms and a well-appointed 4-piece bathroom provide comfort and space for the whole family. This home features a oversized double garage with additional RV parking. You are just steps away from parks, trails and all amenities!

Built in 1987

Essential Information

MLS® #	E4457726
Price	\$629,900
Bedrooms	3
Bathrooms	2.50



Full Baths	2
Half Baths	1
Square Footage	2,298
Acres	0.00
Year Built	1987
Type	Single Family
Sub-Type	Detached Single Family
Style	2 Storey
Status	Active

Community Information

Address	57 Chelsea Way
Area	Sherwood Park
Subdivision	Chelsea Heights
City	Sherwood Park
County	ALBERTA
Province	AB
Postal Code	T8H 1C8

Amenities

Amenities	Deck, Detectors Smoke
Parking	Double Garage Attached

Interior

Interior Features	ensuite bathroom
Appliances	Dishwasher-Built-In, Dryer, Garage Control, Garage Opener, Hood Fan, Oven-Microwave, Refrigerator, Stove-Electric, Washer, Window Coverings
Heating	Forced Air-1, Natural Gas
Fireplace	Yes
Fireplaces	Mantel
Stories	2
Has Basement	Yes
Basement	Full, Unfinished

Exterior

Exterior	Wood, Brick, Vinyl
Exterior Features	Fenced, Landscaped, Playground Nearby, Public Swimming Pool, Public Transportation, Schools, Shopping Nearby

Roof	Asphalt Shingles
Construction	Wood, Brick, Vinyl
Foundation	Concrete Perimeter

Additional Information

Date Listed	September 13th, 2025
Days on Market	34
Zoning	Zone 25

DATA IS DEEMED RELIABLE BUT IS NOT GUARANTEED ACCURATE BY THE REALTORS® ASSOCIATION OF EDMONTON. COPYRIGHT 2025 BY THE REALTORS® ASSOCIATION OF EDMONTON. ALL RIGHTS RESERVED. Trademarks are owned or controlled by the Canadian Real Estate Association (CREA) and identify real estate professionals who are members of CREA (REALTOR®, REALTORS®) and/or the quality of services they provide (MLS®, Multiple Listing Service®)

Listing information last updated on October 17th, 2025 at 6:47pm MDT