

Courtesy Of Sarah N Middleton Of Exp Realty

\$569,900 - 9838 159 Street, Edmonton

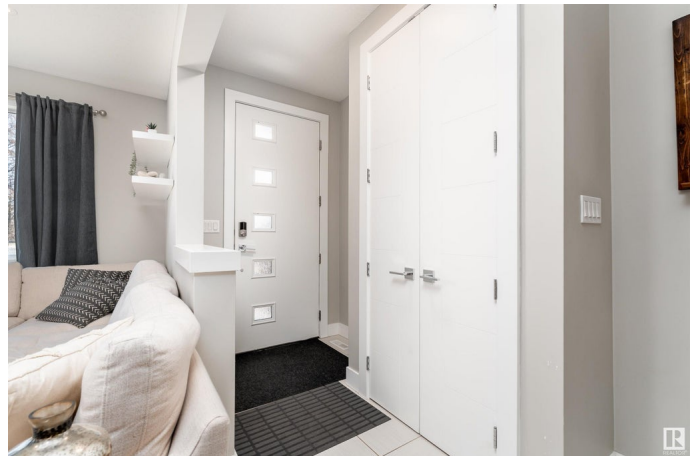
MLS® #E4446546

\$569,900

3 Bedroom, 2.50 Bathroom, 1,831 sqft
Single Family on 0.00 Acres

Glenwood (Edmonton), Edmonton, AB

Welcome to Glenwood! This luxury infill will not disappoint. Loaded with upgrades you typically only find in a much more expensive home, this modern two-storey stands apart from the rest. 5 ft wider than most skinnies, 9 ft ceilings on all three floors, 8 ft interior doors, triple pane windows, engineered hardwood, glass staircase, this home is one of a kind! From the front entry you will be impressed with the open-concept floor plan and the abundance of natural light throughout the main floor. A stunning chef's kitchen with custom cabinetry, huge island, granite counter tops, and upgraded stainless steel appliances (including gas stove) is the star of the show. Upstairs you'll find the primary bedroom with walk-in closet and spa-like ensuite bathroom. 2 additional bdrms as well as a full bath and bonus room complete the 2nd floor. A separate entrance to the basement allows for future legal suite potential. Plus, this home is just down the street from future west-side LRT line



Built in 2017

Essential Information

| | |
|----------|-----------|
| MLS® # | E4446546 |
| Price | \$569,900 |
| Bedrooms | 3 |

| | |
|----------------|------------------------|
| Bathrooms | 2.50 |
| Full Baths | 2 |
| Half Baths | 1 |
| Square Footage | 1,831 |
| Acres | 0.00 |
| Year Built | 2017 |
| Type | Single Family |
| Sub-Type | Detached Single Family |
| Style | 2 Storey |
| Status | Active |

Community Information

| | |
|-------------|---------------------|
| Address | 9838 159 Street |
| Area | Edmonton |
| Subdivision | Glenwood (Edmonton) |
| City | Edmonton |
| County | ALBERTA |
| Province | AB |
| Postal Code | T5P 2Z5 |

Amenities

| | |
|----------------|--------------------------------------|
| Amenities | Air Conditioner, Ceiling 9 ft., Deck |
| Parking Spaces | 4 |
| Parking | Double Garage Detached |

Interior

| | |
|-------------------|--|
| Interior Features | ensuite bathroom |
| Appliances | Air Conditioning-Central, Dishwasher-Built-In, Dryer, Garage Control, Garage Opener, Hood Fan, Refrigerator, Stove-Gas, Washer |
| Heating | Forced Air-1, Natural Gas |
| Fireplace | Yes |
| Fireplaces | Tile Surround |
| Stories | 2 |
| Has Basement | Yes |
| Basement | Full, Unfinished |

Exterior

| | |
|-------------------|---|
| Exterior | Wood, Hardie Board Siding |
| Exterior Features | Back Lane, Fenced, Flat Site, Landscaped, Playground Nearby, Public |

Transportation, Schools, Shopping Nearby

Roof Asphalt Shingles
Construction Wood, Hardie Board Siding
Foundation Concrete Perimeter

School Information

Elementary Brightview School
Middle St. Thomas More
High St. Francis Xavier

Additional Information

Date Listed July 8th, 2025
Days on Market 25
Zoning Zone 22

DATA IS DEEMED RELIABLE BUT IS NOT GUARANTEED ACCURATE BY THE REALTORS® ASSOCIATION OF EDMONTON. COPYRIGHT 2025 BY THE REALTORS® ASSOCIATION OF EDMONTON. ALL RIGHTS RESERVED. Trademarks are owned or controlled by the Canadian Real Estate Association (CREA) and identify real estate professionals who are members of CREA (REALTOR®, REALTORS®) and/or the quality of services they provide (MLS®, Multiple Listing Service®)

Listing information last updated on August 2nd, 2025 at 2:47am MDT