

\$579,888 - 124 Newcastle Crescent, Sherwood Park

MLS® #E4445750

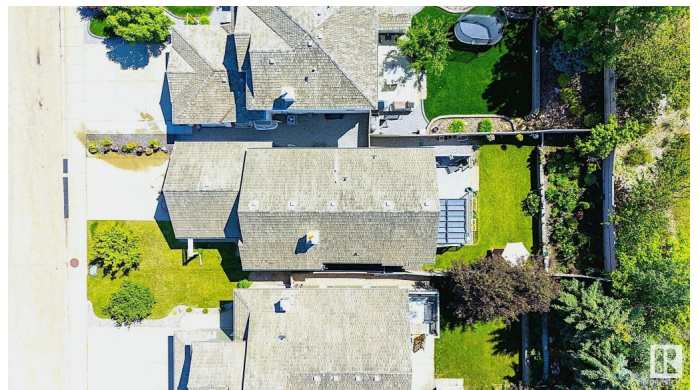
\$579,888

3 Bedroom, 2.50 Bathroom, 1,147 sqft

Single Family on 0.00 Acres

Nottingham, Sherwood Park, AB

Beautifully bright and upgraded home w/ vaulted ceilings, fully developed and spacious basement, and oversized attached double car garage in a quiet neighbourhood. Upon entering, the spacious foyer (tall ceilings) and luxury vinyl plank flooring will make you feel at home. The main floor offers a modern kitchen w/ large eat-in island and quartz countertops, nice stainless steel appliances, and a pantry. Open-concept living room has a natural gas fireplace, and the dining room opens onto a large oversized deck w/ gazebo – perfect for gatherings w/ loved ones. The primary bedroom provides a walk-in closet & full ensuite bath. Secondary bedroom & half-bath complete the top floor. Downstairs has a kitchen, large family room, bedroom and full bathroom. NEW high-efficiency furnace & NEW 50 gal HWT. Outside is a private fence, beautiful backyard w/ pretty perennials & garden. Close proximity to parks, lakes, schools & major shopping. This home has everything you need and is ready to move into.



Built in 2003

Essential Information

MLS® # E4445750

Price \$579,888

Bedrooms 3

Bathrooms	2.50
Full Baths	2
Half Baths	1
Square Footage	1,147
Acres	0.00
Year Built	2003
Type	Single Family
Sub-Type	Detached Single Family
Style	Bungalow
Status	Active

Community Information

Address	124 Newcastle Crescent
Area	Sherwood Park
Subdivision	Nottingham
City	Sherwood Park
County	ALBERTA
Province	AB
Postal Code	T8A 6K7

Amenities

Amenities	Deck, Gazebo, No Animal Home, No Smoking Home, Vaulted Ceiling, Vinyl Windows
Parking Spaces	2
Parking	Double Garage Attached, Over Sized

Interior

Interior Features	ensuite bathroom
Appliances	Dishwasher-Built-In, Dryer, Garage Opener, Hood Fan, Microwave Hood Fan, Washer, Refrigerators-Two, Stoves-Two
Heating	Forced Air-1, Natural Gas
Fireplace	Yes
Fireplaces	See Remarks
Stories	2
Has Basement	Yes
Basement	Full, Finished

Exterior

Exterior	Wood, Vinyl
----------	-------------

Exterior Features	Fenced, Fruit Trees/Shrubs, Landscaped, No Back Lane, Playground Nearby, Schools, Shopping Nearby
Roof	Cedar Shakes
Construction	Wood, Vinyl
Foundation	Concrete Perimeter

School Information

Elementary	Brentwood/F.R./WesHosford
Middle	Haythorne Junior High
High	SherwoodHeights/SalisburyC

Additional Information

Date Listed	July 4th, 2025
Days on Market	46
Zoning	Zone 25

DATA IS DEEMED RELIABLE BUT IS NOT GUARANTEED ACCURATE BY THE REALTORS® ASSOCIATION OF EDMONTON. COPYRIGHT 2025 BY THE REALTORS® ASSOCIATION OF EDMONTON. ALL RIGHTS RESERVED.Trademarks are owned or controlled by the Canadian Real Estate Association (CREA) and identify real estate professionals who are members of CREA (REALTOR®, REALTORS®) and/or the quality of services they provide (MLS®, Multiple Listing Service®)

Listing information last updated on August 19th, 2025 at 8:17am MDT