

\$340,000 - 43 1391 Starling Drive, Edmonton

MLS® #E4437471

\$340,000

3 Bedroom, 2.50 Bathroom, 1,580 sqft

Condo / Townhouse on 0.00 Acres

Starling, Edmonton, AB

Welcome to this modern and functional townhome in the desirable community of Starling! The ground level features an attached double garage (tandem), laundry/utility room, and stairs leading up to the spacious main floor. Enjoy an open-concept layout with a spacious & bright living area, a 2-piece powder room, and a well-equipped kitchen offering generous cabinetry for storage. The dining area flows seamlessly onto a balcony, making it perfect for summer BBQs! Upstairs, the primary bedroom includes a luxurious 4-piece ensuite, and his & hers closets! Two additional bedrooms and a second full bathroom provide space for family, guests, or a home office. Located near the parks & trails of Big Lake Provincial Park, and with easy access to major routes, this home is ideal for first-time buyers, growing families, or investors. Don't miss your chance to own in this sought-after neighbourhood!

Built in 2015

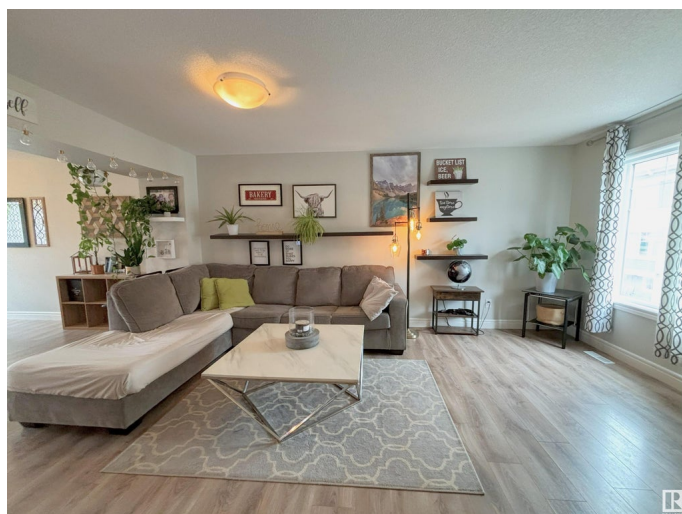
Essential Information

MLS® # E4437471

Price \$340,000

Bedrooms 3

Bathrooms 2.50



Full Baths	2
Half Baths	1
Square Footage	1,580
Acres	0.00
Year Built	2015
Type	Condo / Townhouse
Sub-Type	Townhouse
Style	3 Storey
Status	Active

Community Information

Address	43 1391 Starling Drive
Area	Edmonton
Subdivision	Starling
City	Edmonton
County	ALBERTA
Province	AB
Postal Code	T5S 0L3

Amenities

Amenities	Closet Organizers, Vinyl Windows, See Remarks
Parking	Double Garage Attached

Interior

Interior Features	ensuite bathroom
Appliances	None
Heating	Forced Air-1, Natural Gas
Stories	3
Has Basement	Yes
Basement	None, No Basement

Exterior

Exterior	Wood, Vinyl
Exterior Features	Backs Onto Park/Trees, Golf Nearby, Landscaped, Playground Nearby, Public Transportation, Shopping Nearby
Roof	Asphalt Shingles
Construction	Wood, Vinyl
Foundation	Block

Additional Information

Date Listed	May 20th, 2025
Days on Market	3
Zoning	Zone 59
Condo Fee	\$273

DATA IS DEEMED RELIABLE BUT IS NOT GUARANTEED ACCURATE BY THE REALTORS® ASSOCIATION OF EDMONTON. COPYRIGHT 2025 BY THE REALTORS® ASSOCIATION OF EDMONTON. ALL RIGHTS RESERVED. Trademarks are owned or controlled by the Canadian Real Estate Association (CREA) and identify real estate professionals who are members of CREA (REALTOR®, REALTORS®) and/or the quality of services they provide (MLS®, Multiple Listing Service®)

Listing information last updated on May 23rd, 2025 at 1:32am MDT