

## \$199,000 - 118 616 Mcallister Loop, Edmonton

MLS® #E4436559

**\$199,000**

2 Bedroom, 2.00 Bathroom, 824 sqft

Condo / Townhouse on 0.00 Acres

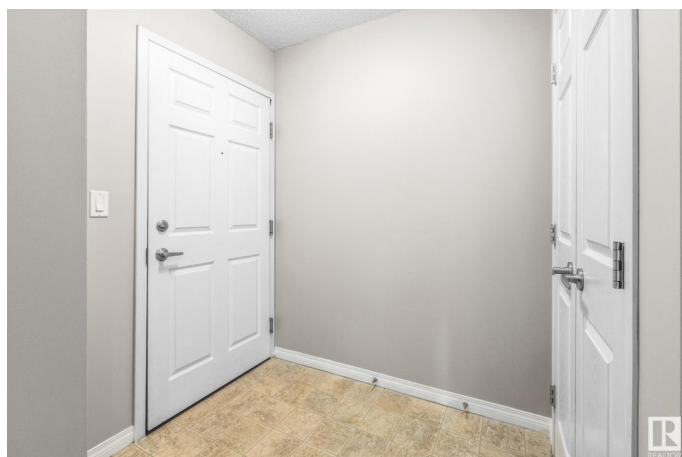
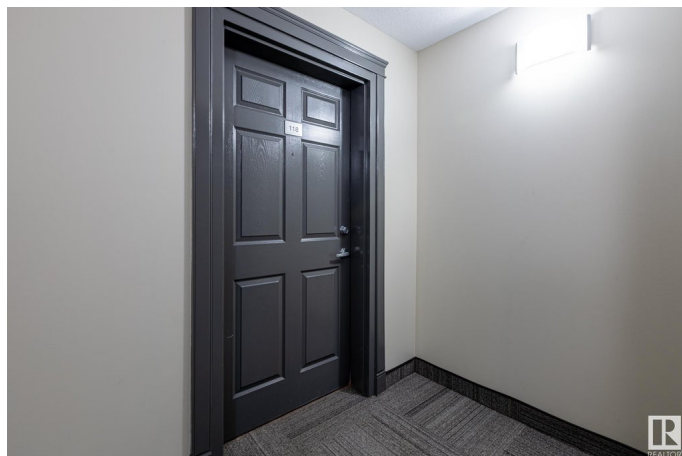
Macewan, Edmonton, AB

CORNER UNIT, surrounded by green space, fantastic Main Floor opportunity in a pet friendly building! SPACIOUS with tons of windows, and private views, this 2 bed 2 bath with UNDERGROUND PARKING (directly beneath the suite), NEW carpet and NEW paint will not last long! With reasonable condo fees including electricity, insuite laundry, professionally cleaned, and ready for you to move in! Located in the quiet family oriented Macewan neighborhood, with plenty of walking trails and parks, plus easy access to the Henday, Highway 2, the soon to be completed LRT stop, or groceries from either Save On or Sobeys, you couldn't ask for a better location! Located on a quiet street, with plenty of visitor parking, and recently redone common areas, do not miss this opportunity, QUICK POSSESSION AVAILABLE!

Built in 2003

### Essential Information

MLS® #	E4436559
Price	\$199,000
Bedrooms	2
Bathrooms	2.00
Full Baths	2
Square Footage	824
Acres	0.00



Year Built	2003
Type	Condo / Townhouse
Sub-Type	Lowrise Apartment
Style	Single Level Apartment
Status	Active

### Community Information

Address	118 616 Mcallister Loop
Area	Edmonton
Subdivision	Macewan
City	Edmonton
County	ALBERTA
Province	AB
Postal Code	T6W 1N1

### Amenities

Amenities	Off Street Parking, On Street Parking, Deck, Intercom, No Animal Home, No Smoking Home, Parking-Visitor, Sprinkler System-Fire, Vinyl Windows, Natural Gas BBQ Hookup
Parking Spaces	1
Parking	Underground

### Interior

Interior Features	ensuite bathroom
Appliances	Dishwasher-Built-In, Hood Fan, Refrigerator, Stacked Washer/Dryer, Stove-Electric, Window Coverings
Heating	Baseboard, Natural Gas
# of Stories	4
Stories	1
Has Basement	Yes
Basement	None, No Basement

### Exterior

Exterior	Wood, Stone, Vinyl
Exterior Features	Airport Nearby, Low Maintenance Landscape, No Back Lane, No Through Road, Playground Nearby, Private Setting, Schools
Roof	Asphalt Shingles
Construction	Wood, Stone, Vinyl
Foundation	Concrete Perimeter

**Additional Information**

Date Listed	May 15th, 2025
Days on Market	2
Zoning	Zone 55
Condo Fee	\$574

DATA IS DEEMED RELIABLE BUT IS NOT GUARANTEED ACCURATE BY THE REALTORS® ASSOCIATION OF EDMONTON. COPYRIGHT 2025 BY THE REALTORS® ASSOCIATION OF EDMONTON. ALL RIGHTS RESERVED.Trademarks are owned or controlled by the Canadian Real Estate Association (CREA) and identify real estate professionals who are members of CREA (REALTOR®, REALTORS®) and/or the quality of services they provide (MLS®, Multiple Listing Service®)

Listing information last updated on May 17th, 2025 at 3:32am MDT