

\$759,900 - 725 Albany Place, Edmonton

MLS® #E4434733

\$759,900

3 Bedroom, 2.50 Bathroom, 2,612 sqft

Single Family on 0.00 Acres

Albany, Edmonton, AB

Wow! What a stunning walk-out home on a cul-de-sac, with great neighbours, backing onto Albany Pond, offering breathtaking west-facing views. Built in 2014, this 2-storey home boasts over 2,600 sq. ft., featuring 3 bedrooms + main floor den & 2.5 baths. Large main-floor windows flood the space with natural light, complementing the upgraded custom kitchen and top-quality finishes. The open-concept design includes glass railings, while upstairs offers a luxurious master suite with a private balcony, a gorgeous spa-like ensuite with custom tile shower, and huge walk-in closet. Two more spacious bedrooms, second-floor laundry, and a large bonus room with soaring 11-ft ceilings & a custom wall unit. The walkout basement features a large rec room, space for a 4th bedroom, and a roughed-in bathroom. Enjoy tranquil pond views from the backyard. Close to St. Albert, Anthony Henday & major amenities! Don't miss out on this luxurious property. You'll be proud to call this home!!

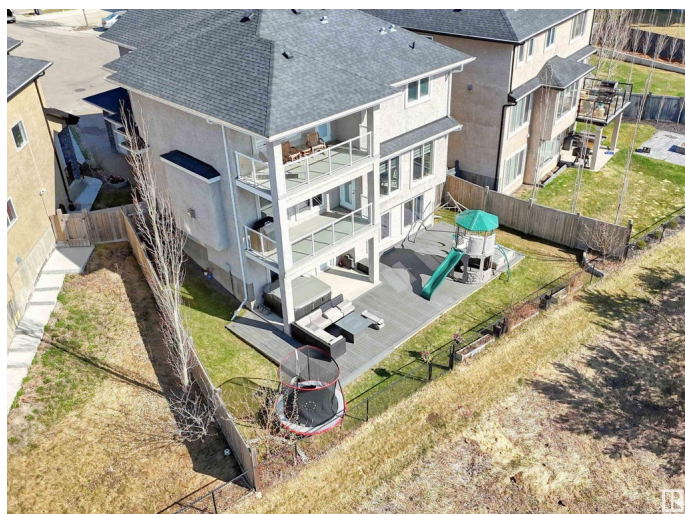
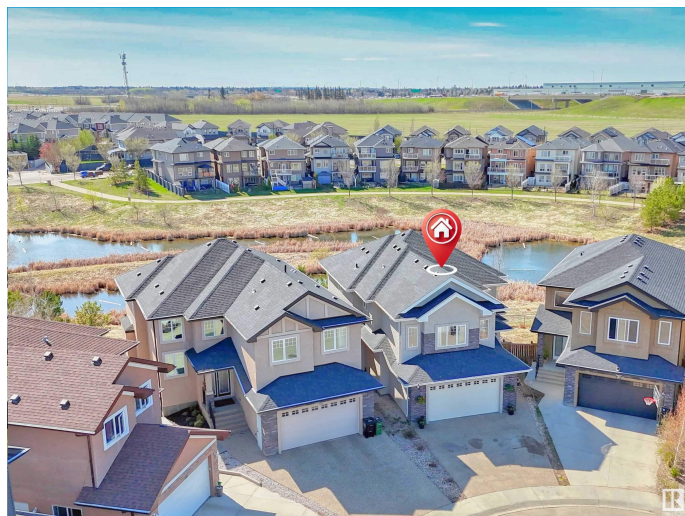
Built in 2014

Essential Information

MLS® # E4434733

Price \$759,900

Bedrooms 3



Bathrooms	2.50
Full Baths	2
Half Baths	1
Square Footage	2,612
Acres	0.00
Year Built	2014
Type	Single Family
Sub-Type	Detached Single Family
Style	2 Storey
Status	Active

Community Information

Address	725 Albany Place
Area	Edmonton
Subdivision	Albany
City	Edmonton
County	ALBERTA
Province	AB
Postal Code	T6V 0H9

Amenities

Amenities	Air Conditioner, Closet Organizers, Deck, Hot Water Tankless, No Animal Home, No Smoking Home, Patio, Vinyl Windows, Walkout Basement, Wall Unit-Built-In
Parking	Double Garage Attached, Insulated, Over Sized
Is Waterfront	Yes

Interior

Interior Features	ensuite bathroom
Appliances	Air Conditioning-Central, Dishwasher-Built-In, Dryer, Fan-Ceiling, Garage Control, Garage Opener, Hood Fan, Oven-Built-In, Oven-Microwave, Refrigerator, Stove-Countertop Gas, Washer, Window Coverings, Hot Tub
Heating	Forced Air-1, Natural Gas
Fireplace	Yes
Fireplaces	Stone Facing
Stories	3
Has Basement	Yes
Basement	Full, Finished

Exterior

Exterior	Wood, Stone, Stucco
Exterior Features	Backs Onto Lake, Backs Onto Park/Trees, Cul-De-Sac, Fenced, Low Maintenance Landscape, Playground Nearby, Public Transportation, View Lake
Roof	Asphalt Shingles
Construction	Wood, Stone, Stucco
Foundation	Concrete Perimeter

School Information

Elementary	Lorelei, St Lucy
Middle	Mary Butterworth
High	Ross Sheppard

Additional Information

Date Listed	May 6th, 2025
Days on Market	15
Zoning	Zone 27

DATA IS DEEMED RELIABLE BUT IS NOT GUARANTEED ACCURATE BY THE REALTORS® ASSOCIATION OF EDMONTON. COPYRIGHT 2025 BY THE REALTORS® ASSOCIATION OF EDMONTON. ALL RIGHTS RESERVED.Trademarks are owned or controlled by the Canadian Real Estate Association (CREA) and identify real estate professionals who are members of CREA (REALTOR®, REALTORS®) and/or the quality of services they provide (MLS®, Multiple Listing Service®)

Listing information last updated on May 21st, 2025 at 3:32am MDT