

\$399,900 - 395 Summerton Crescent, Sherwood Park

MLS® #E4434721

\$399,900

3 Bedroom, 2.50 Bathroom, 1,254 sqft

Single Family on 0.00 Acres

Summerwood, Sherwood Park, AB

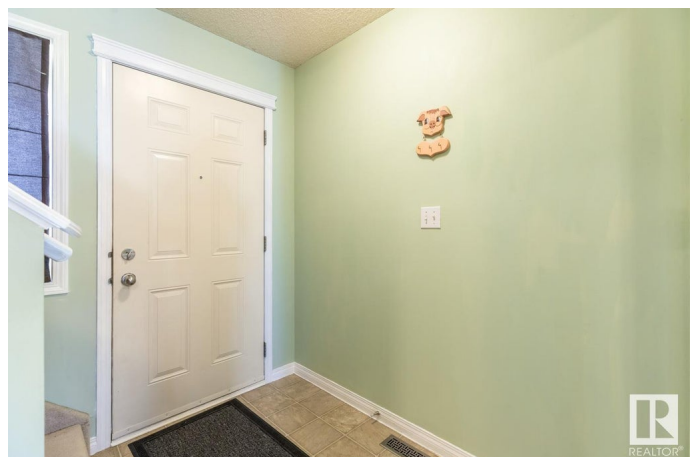
Welcome to this beautifully located half duplex in the desirable community of Summerwood, BACKING directly onto scenic walking trails and lush green space. This 3-bedroom, 2.5 bath home offers a bright and functional layout & NEW ROOF. You are invited in to a spacious entry that leads to the living room featuring a cozy gas fireplace and a spacious dining area with direct access to a large deck—perfect for enjoying the outdoors. The kitchen offers plenty of cabinets, pantry & peninsula island. A guest bath complements the layout. Moving upstairs you will find a king sized primary suite with walk in closet & 4pc ensuite. 2 more bedrooms are both generous in size & 4pc main bath complete the upper level. The basement is unspoiled & offers great potential for future development. LOVE the fenced & landscaped, private yard with deck. Single attached garage! Awesome location, steps away from shopping, schools, park & trails in the family community of Summerwood. This is the perfect place to call home!

Built in 2005

Essential Information

MLS® # E4434721

Price \$399,900



Bedrooms	3
Bathrooms	2.50
Full Baths	2
Half Baths	1
Square Footage	1,254
Acres	0.00
Year Built	2005
Type	Single Family
Sub-Type	Half Duplex
Style	2 Storey
Status	Active

Community Information

Address	395 Summerton Crescent
Area	Sherwood Park
Subdivision	Summerwood
City	Sherwood Park
County	ALBERTA
Province	AB
Postal Code	T8H 2V4

Amenities

Amenities	Deck, Vinyl Windows, See Remarks
Parking	Single Garage Attached

Interior

Interior Features	ensuite bathroom
Appliances	Dishwasher-Built-In, Dryer, Garage Control, Garage Opener, Oven-Microwave, Refrigerator, Stove-Electric, Washer
Heating	Forced Air-1, Natural Gas
Fireplace	Yes
Fireplaces	Corner
Stories	2
Has Basement	Yes
Basement	Full, Unfinished

Exterior

Exterior	Wood, Vinyl
Exterior Features	Backs Onto Park/Trees, Fenced, Landscaped, Playground Nearby,

Private Setting, Public Transportation, Schools, Shopping Nearby, See Remarks

Roof	Asphalt Shingles
Construction	Wood, Vinyl
Foundation	Concrete Perimeter

School Information

Elementary	DAVIDSON CREEK
Middle	SHERWOOD HEIGHTS
High	SALISBURY COMP

Additional Information

Date Listed	May 6th, 2025
Days on Market	13
Zoning	Zone 25

DATA IS DEEMED RELIABLE BUT IS NOT GUARANTEED ACCURATE BY THE REALTORS® ASSOCIATION OF EDMONTON. COPYRIGHT 2025 BY THE REALTORS® ASSOCIATION OF EDMONTON. ALL RIGHTS RESERVED. Trademarks are owned or controlled by the Canadian Real Estate Association (CREA) and identify real estate professionals who are members of CREA (REALTOR®, REALTORS®) and/or the quality of services they provide (MLS®, Multiple Listing Service®)

Listing information last updated on May 19th, 2025 at 2:47pm MDT