

Courtesy Of Marlise Alves Of Real Broker

\$243,800 - 307 Lancaster Terrace, Edmonton

MLS® #E4434450

\$243,800

3 Bedroom, 1.50 Bathroom, 1,283 sqft
Condo / Townhouse on 0.00 Acres

Dunluce, Edmonton, AB

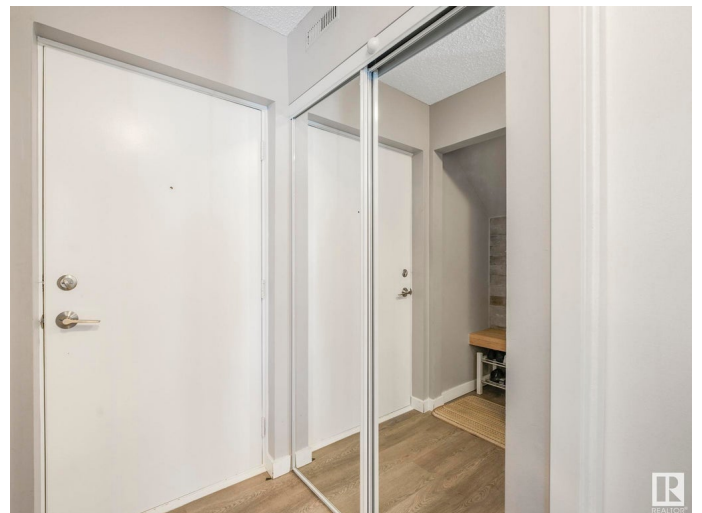
Step into this beautifully Renovated 3-bedroom Townhouse, offering a fresh, modern design with high-end finishes throughout. Virtually everything has been redone—new flooring, contemporary baseboards, elegant light fixtures, and a newer furnace and hot water tank make this home feel brand new. The kitchen features quartz countertops, a custom tile backsplash, and upgraded cabinetry with a buffet area in the spacious dining room. A designer feature wall adds character and charm. The sun-filled living room boasts vaulted ceilings, a cozy fireplace, and access to a private patio—ideal for relaxing or entertaining. Upstairs, you'll find a convenient second-floor laundry, three well-sized bedrooms, and an eye-catching open staircase with custom black rod railing. The bathrooms are equally refined, continuing the quartz and tile finishes throughout. This home also includes a semi-covered parking stall and is perfectly located just steps from the YMCA, with nearby shopping, public transit, Parks & more.

Built in 1977

Essential Information

MLS® # E4434450

Price \$243,800



Bedrooms	3
Bathrooms	1.50
Full Baths	1
Half Baths	1
Square Footage	1,283
Acres	0.00
Year Built	1977
Type	Condo / Townhouse
Sub-Type	Townhouse
Style	2 Storey
Status	Active

Community Information

Address	307 Lancaster Terrace
Area	Edmonton
Subdivision	Dunluce
City	Edmonton
County	ALBERTA
Province	AB
Postal Code	T5X 5T7

Amenities

Amenities	No Animal Home, No Smoking Home, Parking-Visitor, Patio
Parking	Parkade, Stall

Interior

Interior Features	ensuite bathroom
Appliances	Dishwasher-Built-In, Dryer, Refrigerator, Stove-Electric, Washer, Window Coverings
Heating	Forced Air-1, Natural Gas
Stories	2
Has Basement	Yes
Basement	None, No Basement

Exterior

Exterior	Wood, Stucco, Vinyl
Exterior Features	Fenced, Low Maintenance Landscape, Park/Reserve, Playground Nearby, Public Transportation, Schools, Shopping Nearby
Roof	Asphalt Shingles

Construction	Wood, Stucco, Vinyl
Foundation	Concrete Perimeter

School Information

Elementary	Bishop Savaryn, St. Angela
Middle	Sir John Thomson
High	Queen Elizabeth

Additional Information

Date Listed	May 4th, 2025
Days on Market	89
Zoning	Zone 27
Condo Fee	\$484

DATA IS DEEMED RELIABLE BUT IS NOT GUARANTEED ACCURATE BY THE REALTORS® ASSOCIATION OF EDMONTON. COPYRIGHT 2025 BY THE REALTORS® ASSOCIATION OF EDMONTON. ALL RIGHTS RESERVED. Trademarks are owned or controlled by the Canadian Real Estate Association (CREA) and identify real estate professionals who are members of CREA (REALTOR®, REALTORS®) and/or the quality of services they provide (MLS®, Multiple Listing Service®)

Listing information last updated on August 1st, 2025 at 10:48am MDT