

## \$199,900 - 805 10388 105 Street, Edmonton

MLS® #E4417478

**\$199,900**

1 Bedroom, 1.00 Bathroom, 603 sqft

Condo / Townhouse on 0.00 Acres

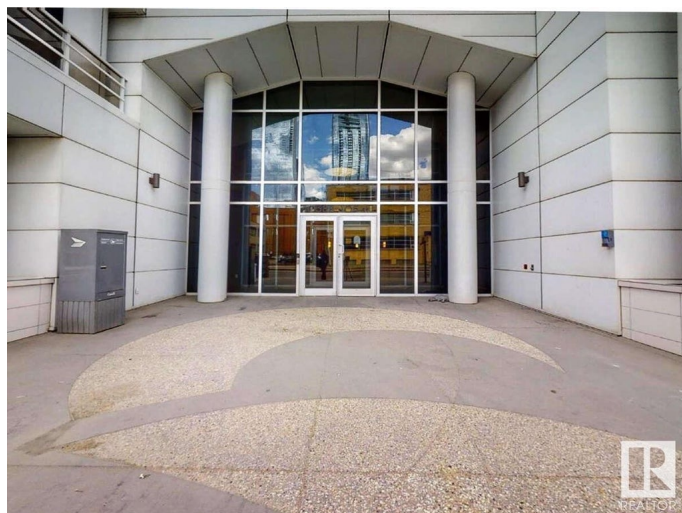
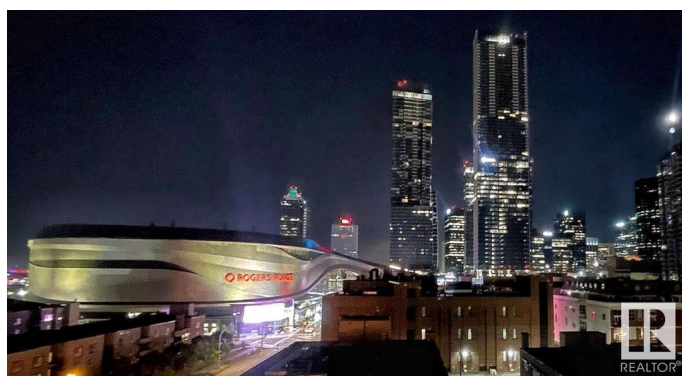
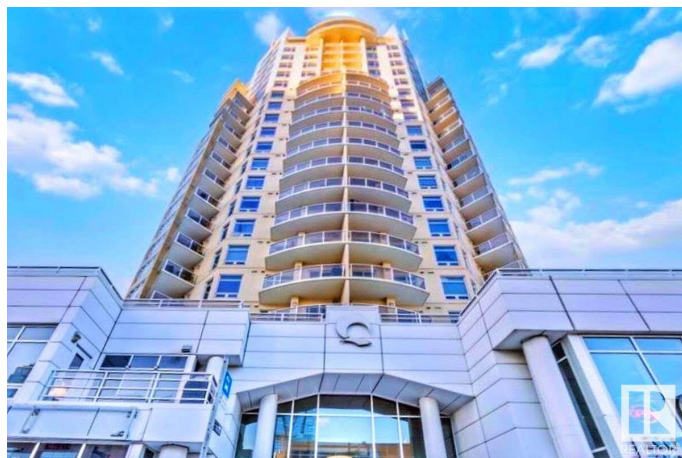
Downtown (Edmonton), Edmonton, AB

For more information, please click on "View Listing on Realtor Website". LUXURY and IMMACULATE 1-BD Condo near Ice District with incredible views of vibrant downtown skyline. Next to Rogers Arena and MacEwan U. Sleek modern design, open-concept living room offers flexible furnishing arrangements. Quartz and Granite countertops throughout. Kitchen equipped with glasstop stove, SS appliances including a compact dishwasher and full-size 36" refrigerator. Steps to MacEwan LRT, grocery stores, trendy Ice District restaurants & City Center shopping. Bedroom nestled in NE facing corner with incredible view of Rogers Arena. 3-Piece Bathroom with large soaker tub. In-suite washer/dryer. Includes secure and heated underground parking stall. Balcony equipped with BBQ gas line. In-suite washer/dryer. Building offers security features, party room w/ kitchen, water included and free visitor parking.

Built in 2010

### Essential Information

MLS® #	E4417478
Price	\$199,900
Bedrooms	1
Bathrooms	1.00



Full Baths	1
Square Footage	603
Acres	0.00
Year Built	2010
Type	Condo / Townhouse
Sub-Type	Apartment High Rise
Style	Single Level Apartment
Status	Active

### **Community Information**

Address	805 10388 105 Street
Area	Edmonton
Subdivision	Downtown (Edmonton)
City	Edmonton
County	ALBERTA
Province	AB
Postal Code	T5J 0C2

### **Amenities**

Amenities	Ceiling 9 ft., Parking-Plug-Ins, Parking-Visitor, Party Room, Secured Parking, Security Door, Sprinkler System-Fire
Parking Spaces	1
Parking	Parkade, Stall

### **Interior**

Appliances	Dishwasher-Built-In, Microwave Hood Fan, Refrigerator, Stacked Washer/Dryer, Stove-Countertop Electric
Heating	Heat Pump, Electric
# of Stories	22
Stories	1
Has Basement	Yes
Basement	None, No Basement

### **Exterior**

Exterior	Concrete
Exterior Features	Public Transportation, Schools, View City, View Downtown
Roof	Tar & Gravel
Construction	Concrete
Foundation	Concrete Perimeter

**Additional Information**

Date Listed	January 9th, 2025
Days on Market	125
Zoning	Zone 12
Condo Fee	\$406

DATA IS DEEMED RELIABLE BUT IS NOT GUARANTEED ACCURATE BY THE REALTORS® ASSOCIATION OF EDMONTON. COPYRIGHT 2025 BY THE REALTORS® ASSOCIATION OF EDMONTON. ALL RIGHTS RESERVED.Trademarks are owned or controlled by the Canadian Real Estate Association (CREA) and identify real estate professionals who are members of CREA (REALTOR®, REALTORS®) and/or the quality of services they provide (MLS®, Multiple Listing Service®)

Listing information last updated on May 14th, 2025 at 4:02pm MDT